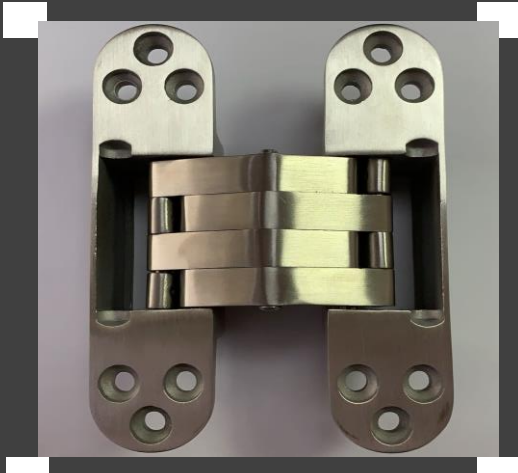




SOLID STAINLESS STEEL LINKS

SCH220-C
Invisible Hinge

BS EN1634
120 MINUTES



DOOR WEIGHT AND SIZE

The new "Marco Polo" heavy duty concealed invisible hinge are made of casted stainless steel grade 304 body with solid stainless steel links, are ideal for heavy duty door with extra-ordinary weight. SCH218-C is mainly for the door with 45-50mm door thickness, SCH220-C is designed for the thicker door upto 60mm.

For the door size: 900x2100x60mm - 3 nos. of 220 hinge is able to carry the door upto 160kg, additional 700mm add 1 hinge on.

SPECIFICATION:

- * FULL MORTISE INTO THE DOOR AND FRAME CANNOT BE SEEN FROM EITHER SIDE WHEN CLOSED.
- * SUIT DOOR UPTO 60MM DOOR THICKNESS
- * 180 DEGREE SWINGS IN ONE DIRECTION
- * NO ADJUSTMENT NEEDED ONCE INSTALLED
- * SUITABLE FOR FIRE RATED DOOR
- * COMPLY TO BS EN 1935
- * STAINLESS STEEL GRADE 304 BODY
- * SOLID STAINLESS STEEL GRADE 304 LINKS
- * FOR DOOR UPTO 160 KG

AVAILABLE FINISH

- SATIN STAINLESS STEEL / HAIR LINE / US32D
- POLISHED STAINLESS STEEL / MIRROR / US32
- DUAL BLACK / MATT / US19
- ANTIQUÉ BRASS / BRONZE / US5
- ANTIQUÉ COPPER / COPPER / US11

DIMENSION

140*34MM

MARCO POLO ARCHITECTURAL HARDWARE



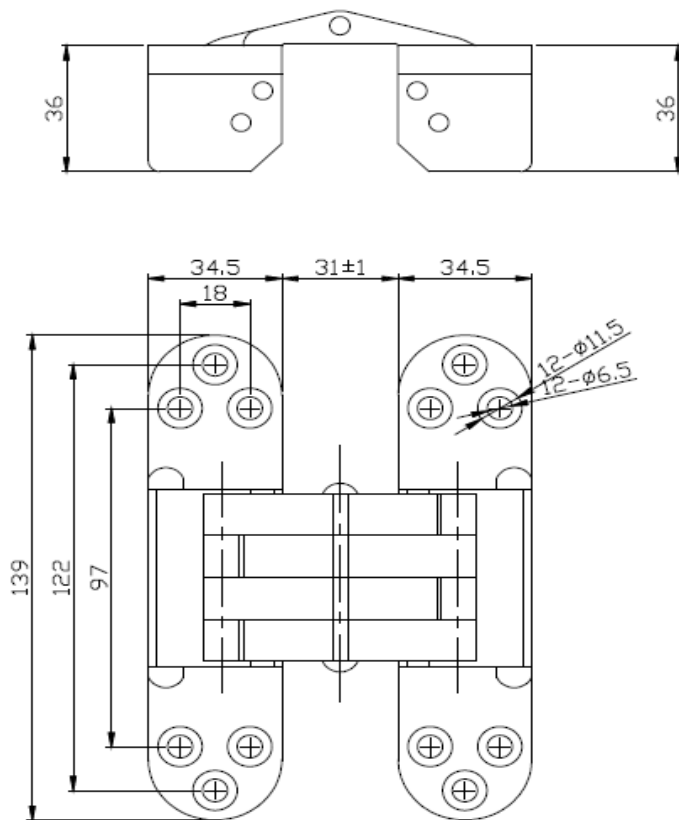
SOLID STAINLESS STEEL LINKS

STAINLESS STEEL

Stainless steel is a rust resistant metal alloy with great strength similar to steel. It can be used even in chemical storage or areas such as seacoast, humid tropical or sub-tropical and industrial areas where corrosion on hinge is a major concern. Melting point of stainless steel is approximately 1,371 °C.

It is an iron-chromium-nickel alloy which can be hardened by cold working. Nickel is the main element that varies to form different alloy of this class while carbon is kept to low levels. The higher content of nickel will increase ductility of the metal. Chromium is added for corrosion resistance of the metal. When Chromium content is increased to raise corrosion resistance nickel content must also be increased to maintain the austenitic structure.

These alloys are slightly magnetic in the cold-worked condition; Grade 304 and 316 are austenitic stainless steel most commonly ordered for manufacturing hinges.



SCH220-C
Invisible Hinge

